



MOREDAY



MORE THEN SOLAR

MINDIAN ELECTRIC CO., LTD.

Add: Malujiao Industrial Zone, North Baixiang town, Yueqing, Zhejiang, China.

Sales call: 0577-62860666 0577-62860667

Http: www.moredaysolar.com

E-mail: info@moredaysolar.com

MDYB220222

WWW.MOREDAYSOLAR.COM

MOREDAY

MOREDAY



Company renderings, subject to actual conditions

COMPANY PROFILE

Founded in 2009, Moreday Solar is a R&D and manufacturing company integrating photovoltaics and new energy industry. The original intention of Moreday Solar is to bring more clean energy to the world and enjoy a better life.

The company's main products: photovoltaic convergence and grid-connected products, low-voltage electrical, energy storage and application products, solar power transmission and distribution products and solar system manufacturing.

The company takes solar energy sharing as its vision, technological innovation as its driving force, customer-oriented, and has obtained more than 30 national patents. Its products have passed CQC, CE, CB, TUV, ROHS and other certifications, and ISO9001 quality system certification, with more than 1,000 services. Customers, the products are exported to more than 50 countries in Europe, America, Southeast Asia, the Middle East and other regions.

We hope to work with more partners to bring solar energy to every region of the world, promote the widespread use of green and clean energy, and leave more day for the earth



President's thoughts

As we look back on 2020, I am proud of how we adapted to the challenges that came our way. We took care of our employees, provided for our customers and partners, and prospered along the way.

We are optimistic about our resilience, flexibility, and solid business processes, reflecting the best in sustainability.

Sustainability is at our core at MOREDAY and our purpose remains to advance a sustainable future for all. As part of our commitment, we released our Reports on the development of the photovoltaic field in the next five years and better sustainable approaches. As we work towards an equitable energy future for all, we are aware of the importance of mobilizing the world to reduce the carbon footprint and electrify the planet.

We will continue to work hard to deliver high quality products that produce clean energy, save our customers money, and provide them with complete energy independence. Looking forward in 2021, we are excited about the strength in worldwide demand for solar, the ramp of our solar systems and upcoming new products, the higher levels of customer service, and our ongoing digital transformation efforts.

As always, I thank our employees, customers, partners, and shareholders for their continued support.

we will continue with our mission to deliver technology solutions that make clean energy affordable, reliable and accessible to all.

To be continued, More than solar



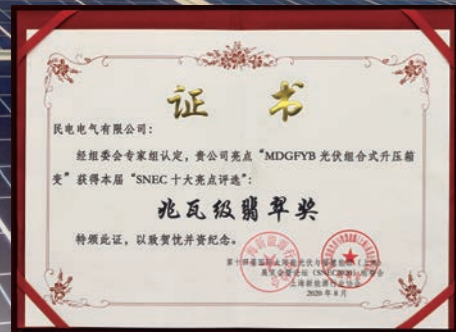
Dedao Huang
President and CEO

Oct.20, 2021

Corporate Advantage



Enterprise honor and qualification



PATENT FOR INVENTION

UTILITY MODEL PATENT CERTIFICATE

DESIGN PATENT CERTIFICATE

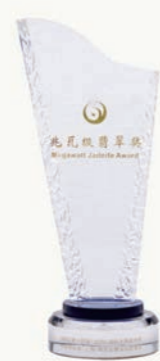
TECHNOLOGY-BASED ENTERPRISE



ISO14001

ISO9001

ISO45001



CE



CQC

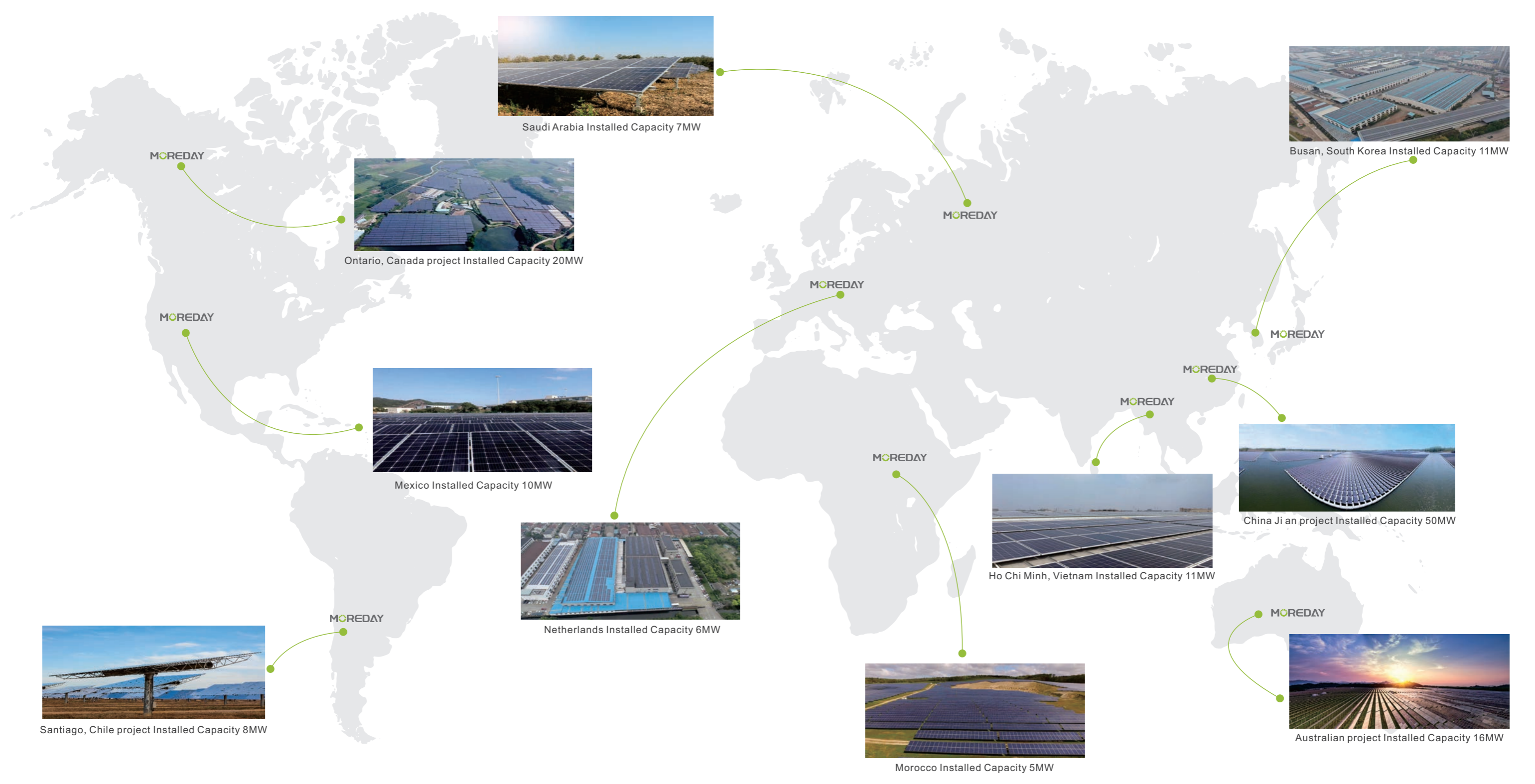
- Member of Asian Photovoltaic Industry Association
- National high-tech enterprise
- Well-known brands in China's photovoltaic industry in 2019
- Caring for employees and caring enterprises in 2020

- 2019、2020 SNEC Megawatt jade Award
- 2020 Outstanding Photovoltaic Enterprise
- Chinese technology-based SMEs
- Zhejiang Promise-keeping 3A Enterprise

MOREDAY

Corporate partner





50+ Exporting Countries
5GW+ Cumulative shipments
30+ Patents
12yrs Industry experience
1000+ Global customers

► Overview

Dc circuit breaker limited current performance, can accurately protect relay protection, automatic device from overload, short circuit and other faults. Advantages of current limiting and arc extinguishing capabilities of dc circuit breakers.

► Technical Specification

MDB1Z-63

| Pole | | 1P | 2P | 3P | 4P |
|---|----------|--------------------------------------|--------------|---------|----------|
| Rated Working Voltage Ue | | 250V DC | 600V DC | 800V DC | 1000V DC |
| Frame Current | | 63A | | | |
| Rated Current In | | 63A, 50A, 40A, 32A, 25A, 20A,16A,10A | | | |
| Rated Insulation Voltage Ui | | 1000V | | | |
| Rated Impulse Withstand Voltage Uimp | | 6kV | | | |
| Tripping Characteristics | | B/C | | | |
| Tripping Type | | Thermal Magnetic | | | |
| Rated Ultimate Short-Circuit Breaking Capacity Icu | | 6kA | | | |
| Rated Service Short-Circuit Interrupting Capacity Ics | | 6kA | | | |
| Electrical Life | Actual | > 1500 Cycles | | | |
| | Standard | 300 Cycles | | | |
| Mechanical Life | Actual | >10000 Cycles | | | |
| | Standard | 9700 Cycles | | | |
| Overvoltage Category | | III | | | |
| Pollution Degree | | 3 | | | |
| Ingress Protection | | IP40; Wiring port IP20 | | | |
| Resistance to humidity and heat | | Class 2 | | | |
| Relative Humidity | | ≤ 95 % | | | |
| Vibration | | acc. to IEC60068-2-6 | | | |
| Shocks | | acc. to IEC60068-2-27 | | | |
| Terminal capacity | | 2.5~35mm ² | | | |
| Fastening Torque of Terminals | | 2.0 ~ 3.5 Nm | | | |
| Ambient Temperature | | -30°C~70°C | | | |
| Storage Temperature | | -40°C~85°C | | | |
| Installation Method | | DIN | | | |
| Elevation | | ≤2000m | | | |
| Dimension | | | Width:72mm | | |
| | | | High: 87.5mm | | |
| | | | Depth: 81mm | | |
| Weight | | 0.12kg/Pole | | | |



MDB1Z-63



MDB1Z-100

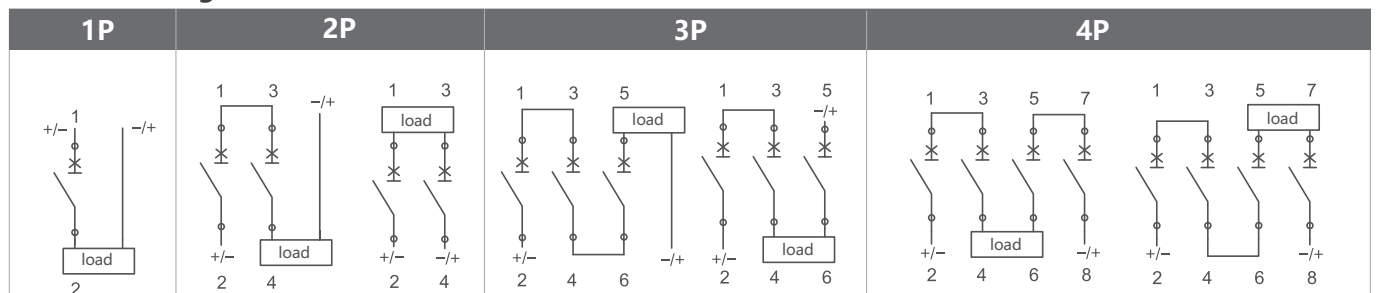


► Technical Specification

MDB1Z-100

| Pole | | 2P | 4P |
|---|----------|------------------------|----------|
| Rated Working Voltage Ue | | 600V DC | 1000V DC |
| Frame Current | | 100A | |
| Rated Current In | | 63A, 80A, 100A | |
| Rated Insulation Voltage Ui | | 1000V | |
| Rated Impulse Withstand Voltage Uimp | | 6kV | |
| Tripping Characteristics | | B/C | |
| Tripping Type | | Thermal Magnetic | |
| Rated Ultimate Short-Circuit Breaking Capacity Icu | | 15kA(In≤100A) | |
| Rated Service Short-Circuit Interrupting Capacity Ics | | 10kA(In≤100A) | |
| Electrical Life | Actual | > 1500 Cycles | |
| | Standard | 300 Cycles | |
| Mechanical Life | Actual | >10000 Cycles | |
| | Standard | 9700 Cycles | |
| Overvoltage Category | | III | |
| Pollution Degree | | 3 | |
| Ingress Protection | | IP40; Wiring port IP20 | |
| Resistance to humidity and heat | | Class 2 | |
| Relative Humidity | | ≤ 95 % | |
| Vibration | | acc. to IEC60068-2-6 | |
| Shocks | | acc. to IEC60068-2-27 | |
| Terminal capacity | | 2.5~35mm ² | |
| Fastening Torque of Terminals | | 2.0~3.5 Nm | |
| Ambient Temperature | | -30°C~70°C | |
| Storage Temperature | | -40°C~85°C | |
| Installation Method | | DIN | |
| Elevation | | ≤2000m | |
| Dimension | | Width:72mm | |
| | | High: 87.5mm | |
| | | Depth: 81mm | |
| Weight | | 0.12kg/Pole | |

► Contact Configuration



► Standard time-current band

| Test | Instantaneous release type | DC test current | Starting state | Tripping or non-tripping time limit | Expected results | Remarks |
|------|----------------------------|-----------------|--------------------|--|------------------|---|
| | B、C | 1.13In | Cold state | $t \geq 1h(I_n \leq 63A)$ | No tripping | / |
| b | B、C | 1.45In | Followed by a test | $t < 1h(I_n \leq 63A)$ | Tripping | The current rises steadily within 5S |
| c | B、C | 2.55In | Cold state | $1s < t < 60s(I_n \leq 63A)$ $1s < t < 60s(I_n \leq 63A)$ | Tripping | / |
| d | B、C | 4In | Cold state | $0.1s < t < 45s(I_n \leq 32A)$ $0.1s < t < 90s(I_n \leq 32A)$ | Tripping | Close the auxiliary switch to turn on the power |
| | | 7In | | $0.1s < t < 15s(I_n \leq 32A)$ $0.1s < t < 30s(I_n \leq 32A)$ | | |
| e | B、C | 7In | Cold state | $t < 0.1s$ | Tripping | |
| | | 15In | | | | |

► Dimensions(unit:mm)

