



MOREDAY



MORE THEN SOLAR

MINDIAN ELECTRIC CO., LTD.

Add: Malujiao Industrial Zone, North Baixiang town, Yueqing, Zhejiang, China.

Sales call: 0577-62860666 0577-62860667

Http: www.moredaysolar.com

E-mail: info@moredaysolar.com

MDYB220222

WWW.MOREDAYSOLAR.COM

MOREDAY

MOREDAY



Company renderings, subject to actual conditions

COMPANY PROFILE

Founded in 2009, Moreday Solar is a R&D and manufacturing company integrating photovoltaics and new energy industry. The original intention of Moreday Solar is to bring more clean energy to the world and enjoy a better life.

The company's main products: photovoltaic convergence and grid-connected products, low-voltage electrical, energy storage and application products, solar power transmission and distribution products and solar system manufacturing.

The company takes solar energy sharing as its vision, technological innovation as its driving force, customer-oriented, and has obtained more than 30 national patents. Its products have passed CQC, CE, CB, TUV, ROHS and other certifications, and ISO9001 quality system certification, with more than 1,000 services. Customers, the products are exported to more than 50 countries in Europe, America, Southeast Asia, the Middle East and other regions.

We hope to work with more partners to bring solar energy to every region of the world, promote the widespread use of green and clean energy, and leave more day for the earth



President's thoughts

As we look back on 2020, I am proud of how we adapted to the challenges that came our way. We took care of our employees, provided for our customers and partners, and prospered along the way.

We are optimistic about our resilience, flexibility, and solid business processes, reflecting the best in sustainability.

Sustainability is at our core at MOREDAY and our purpose remains to advance a sustainable future for all. As part of our commitment, we released our Reports on the development of the photovoltaic field in the next five years and better sustainable approaches. As we work towards an equitable energy future for all, we are aware of the importance of mobilizing the world to reduce the carbon footprint and electrify the planet.

We will continue to work hard to deliver high quality products that produce clean energy, save our customers money, and provide them with complete energy independence. Looking forward in 2021, we are excited about the strength in worldwide demand for solar, the ramp of our solar systems and upcoming new products, the higher levels of customer service, and our ongoing digital transformation efforts.

As always, I thank our employees, customers, partners, and shareholders for their continued support.

we will continue with our mission to deliver technology solutions that make clean energy affordable, reliable and accessible to all.

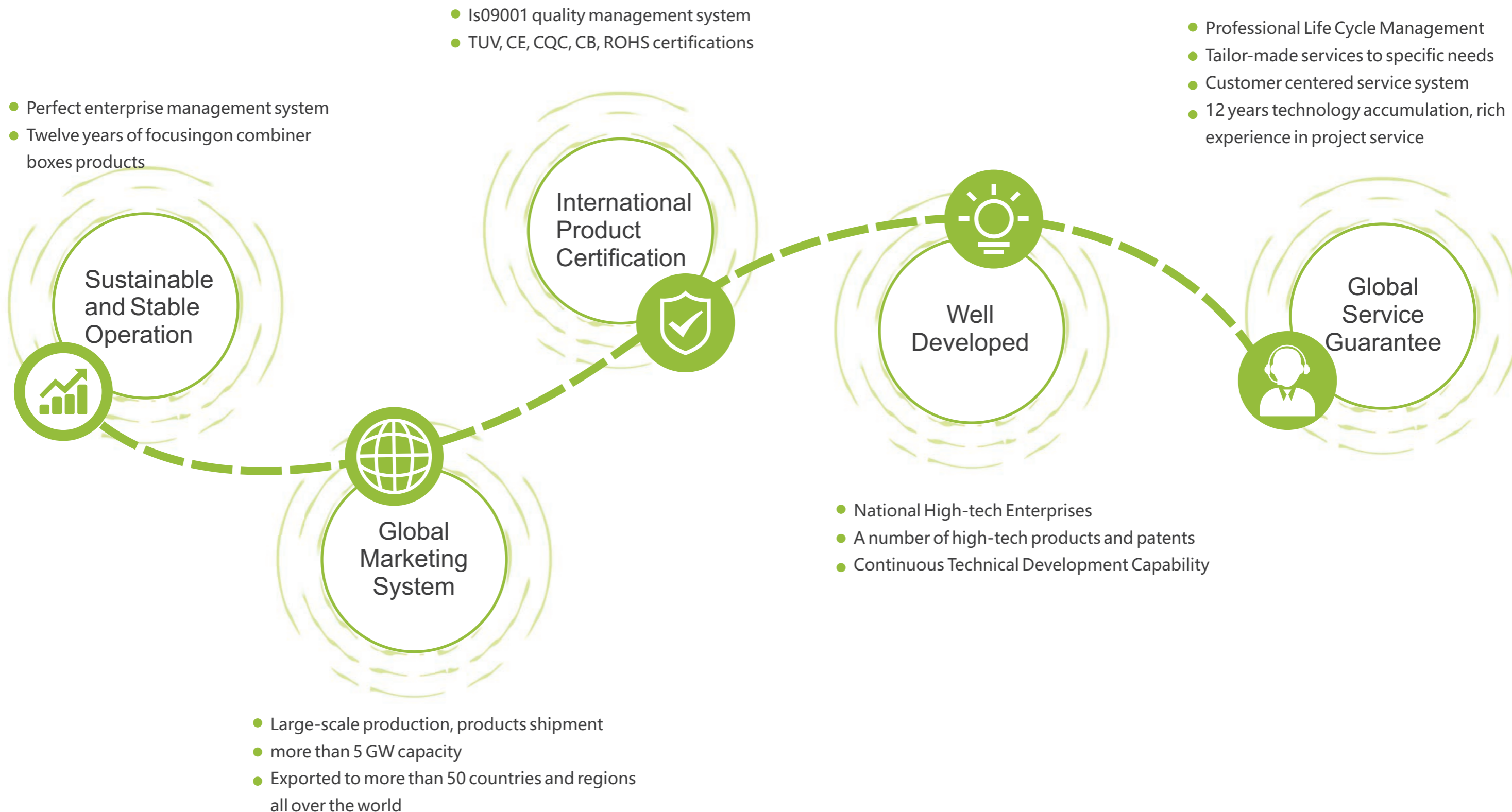
To be continued, More than solar



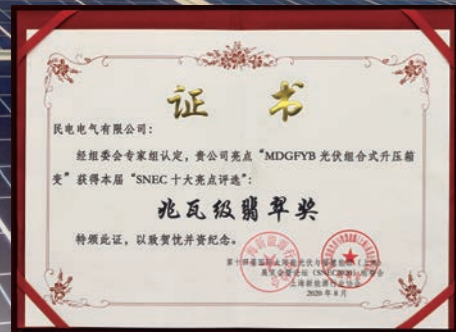
Dedao Huang
President and CEO

Oct.20, 2021

Corporate Advantage



Enterprise honor and qualification



PATENT FOR INVENTION

UTILITY MODEL PATENT CERTIFICATE

DESIGN PATENT CERTIFICATE

TECHNOLOGY-BASED ENTERPRISE



ISO14001

ISO9001

ISO45001



- Member of Asian Photovoltaic Industry Association
- National high-tech enterprise
- Well-known brands in China's photovoltaic industry in 2019
- Caring for employees and caring enterprises in 2020

- 2019、2020 SNEC Megawatt jade Award
- 2020 Outstanding Photovoltaic Enterprise
- Chinese technology-based SMEs
- Zhejiang Promise-keeping 3A Enterprise



CE

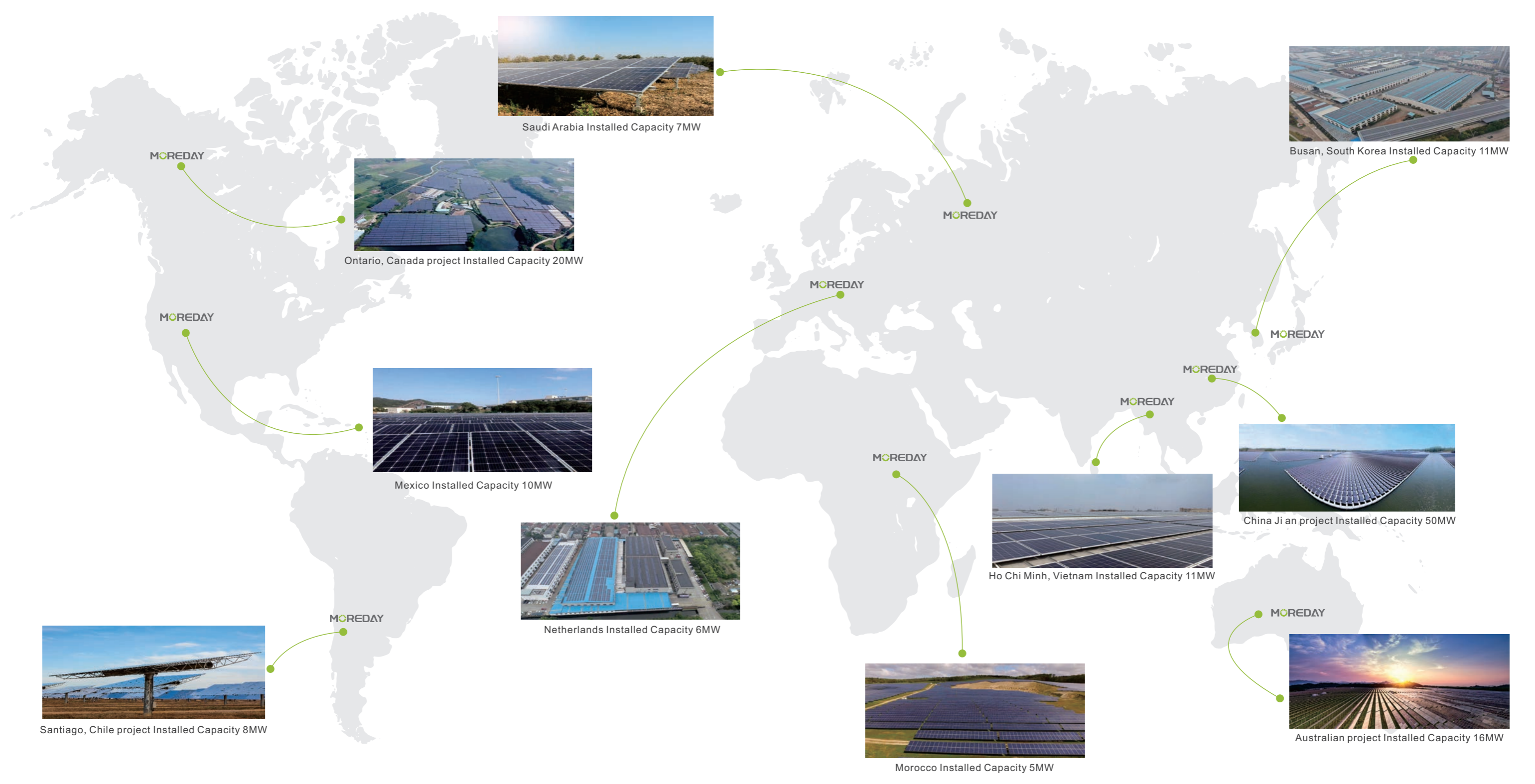


CQC

MOREDAY

Corporate partner





50+ Exporting Countries
5GW+ Cumulative shipments
30+ Patents
12yrs Industry experience
1000+ Global customers



► **Overview**

MDM1 series plastic case circuit breakers (hereinafter referred to as circuit breakers) are the result of one of the new circuit breakers researched and developed by international advanced design and manufacturing technology. Its rated insulation voltage is 1000V, suitable for AC 50Hz, the rated working voltage is 690V and below, (SHRM1-63 is 400V), infrequent operation in circuits with rated working current up to 800A. It is used for switching and infrequent starting of the motor. Circuit breaker with overload, short circuit and undervoltage protection function, can protect the circuit and power supply equipment from damage.

► **Features**

- ◆ The insulating parts are made of high-strength DMC unsaturated polyester glass fiber plastic, and the proportion of aluminum hydroxide content is appropriately increased to improve the flame retardant performance of the product.
- ◆ The conductive system adopts advanced silver-plating process, increasing the thickness of silver-plating to improve the current-carrying capacity and heat dissipation of the product.
- ◆ The accessories of circuit breakers are selected from professional manufacturers that meet national standards. Further improve product reliability.
- ◆ The operating mechanism "three buckles" (locking, rebuckling, and jumping) adopts advanced professional technology to ensure the hardness and toughness of the "three buckles".
- ◆ Further improve the reliability and stability of the product.
- ◆ The metal parts of the product adopt the environmental protection electroplating process, which conforms to the EU environmental protection standards.
- ◆ Circuit breakers are classified into three types according to their rated ultimate short-circuit breaking capacity (Icu): L type (standard type), M type (higher breaking type), and H type (high breaking type). The circuit breaker has the advantages of small size, high breaking, short arcing (zero arcing in some specifications), anti-vibration and other characteristics.
- ◆ This circuit breaker can be installed vertically (ie vertical installation) or horizontally (ie horizontal installation).
- ◆ This circuit breaker has isolation function, and its corresponding symbols are:

► **Normal working conditions**

- ◆ Ambient medium temperature: not higher than +40°C (+45°C for common products) and not lower than -5°C, and the average value of 24h does not exceed +35°C (+40°C for common products);
- ◆ Installation site: the altitude does not exceed 2000m;
- ◆ Installation site: The relative humidity of the air does not exceed 50% when the maximum temperature is +40°C, and can have a higher relative humidity at lower temperatures, such as 90% at 20°C;
Condensation should take special measures;
- ◆ Pollution level: Level 3;
- ◆ Installation category: The installation category of the main circuit of the circuit breaker and the undervoltage release is III, and the installation category of the other auxiliary circuits and control circuits is II;
- ◆ The circuit breaker can withstand the influence of humid air, salt mist, oil mist, mold and nuclear radiation;
- ◆ The maximum inclination of the circuit breaker installation is ±22.5°;
- ◆ The circuit breaker can work reliably under earthquake conditions (4g);
- ◆ The circuit breaker should be installed in a place where there is no explosion hazard, no conductive dust, and no enough to corrode metals and damage insulation;
- ◆ The circuit breaker should be installed in a place free from rain and snow.

► Protection features

The thermal release of the circuit breaker has inverse time characteristics; the electromagnetic release is instantaneous, and the characteristics are shown in Table 3 (for power distribution) and Table 4 (for motor protection).

Table 3 (for power distribution)

Rated operating current of release (A)	Thermal release (reference temperature 40°C)		Electromagnetic release operating current (A)
	1.05In (cold state) non-action time (h)	1.30In (hot state) operating time (h)	
10<In≤63	≥1	<1	10In±20%
63<In≤100	≥2	<2	10In±20%
100<In≤800	≥2	<2	5In±20% 10In±20%

Note: There is no 5In electromagnetic trip unit in the 100A and 125A specifications of SHRM1-250.

Table 4 (for motor protection)

Rated operating current of release (A)	Thermal release (reference temperature 40°C)				Electromagnetic release operating current (A)
	1.0In (cold state) non-action time (h)	1.20In (hot state) operating time (h)	1.50In (cold state) non-action time (h)	7.20In (hot state) operating time (h)	
10≤In≤205	≥2	≤2	4min	4s<T≤10s	12In±20%
225<In≤800			8min	6s<T≤20s	

► MDM1-125 (L, M, H) front wiring (two-pole, three-pole, four-pole) (X-X, Y-Y are the center of the three-pole circuit breaker)

Thickness of undervoltage release:
for A, B type m=12 C type m=21

Hole size of front wiring installation board

Model	H	H1
MDM1-125L	68	86
MDM1-125M、H	86	104
MDM1-125 four-pole		

► Main technical performance indicators

Frame current (A)	63			125(100)				250				400			
model	MDM1-63L	MDM1-63M		MDM1-125L	MDM1-125M	MDM1-125H		MDM1-250L	MDM1-250M	MDM1-250H		MDM1-400L	MDM1-400M	MDM1-400H	
Rated current In(A)	(6), 10, 16, 20, 25, 32, 40, 50, 63			(10), 10, 16, 20, 25, 32, 40, 50, 63, 80, 100, 125				100, 125, 140, 160, 180, 200, 225, 250				225, 250, 315, 350, 400			
Number of poles (P)	3	3	4	3	3	4	3	3	3	4	4	3	3	4	4
Rated insulation voltage Ui(V)	AC500			AC1000				AC1000				AC800			
Rated impulse withstand voltage Uimp(V)	6000			8000				8000				8000			
Rated working voltage Ue(V)	AC400			AC400	AC400	AC400	AC400	AC400	AC400	AC400	AC400	AC400	AC400	AC400	AC400
Arc distance(mm)	0			0(≥50)				≥50				≥100			
Rated ultimate short-circuit breaking capacity Icu(kA)	AC400V	25	50	35	50	80	35	50	80	50	65	100			
Rated operating short-circuit breaking capacity Ics(KA)	AC400V	18	35	22	35	50	25	35	50	35	42.5	65			
Operational performance (times)	power ups	6000						3000				2000			
	no power	8500						7000				4000			
Dimensions (mm) 	W	78	78	103	92	92	122	92	107	107	142	107	150	198	150
	L	135	135		150	150			165	165			257		
	H	73.5	81.5		68	86			86	103			106.5		

Note: The limit breaking and arcing distance includes horizontal and vertical installation.

*MDM1-125 arcing distance is divided into "0" arcing and 50mm, which should be specified when ordering.

There is no "0" arcing in the 690V specification of the four-pole circuit breaker.

Frame current (A)		630			800			1250			
model		MDM1-630L	MDM1-630M	MDM1-630H	MDM1-800L	MDM1-800H	MDM1-1250L	MDM1-1250M	MDM1-1250H		
Rated current In(A)		400, 500, 630			630, 700, 800			800, 1000, 1250			
Number of poles (P)		3	3	4	3	4	3	3	4	3	
Rated insulation voltage Ui(V)		AC800			AC800			AC800			
Rated impulse withstand voltage Uimp(V)		8000			8000			8000			
Rated working voltage Ue(V)		AC400	AC400 AC690	AC400	AC400 AC690	AC400	AC400	AC400 AC690	AC400		
Arc distance(mm)		>100			>100			>100			
Rated ultimate short-circuit breaking capacity Lcu(kA)	AC690V AC400V	50	65	100	85 30	100	85 30	100			
Rated operating short-circuit breaking capacity Lcs(KA)	AC690V AC400V	35	42.5	65	50 20	80	50 20	65			
Operational performance (times)	power ups no power	1500 4000			1000 2500			1500 4000			
Dimensions (mm)		W	182	240	182	210	280	210	210	280	210
		L	270			280	280	280	470		
		H	110			115.5	115.5	115.5	191		